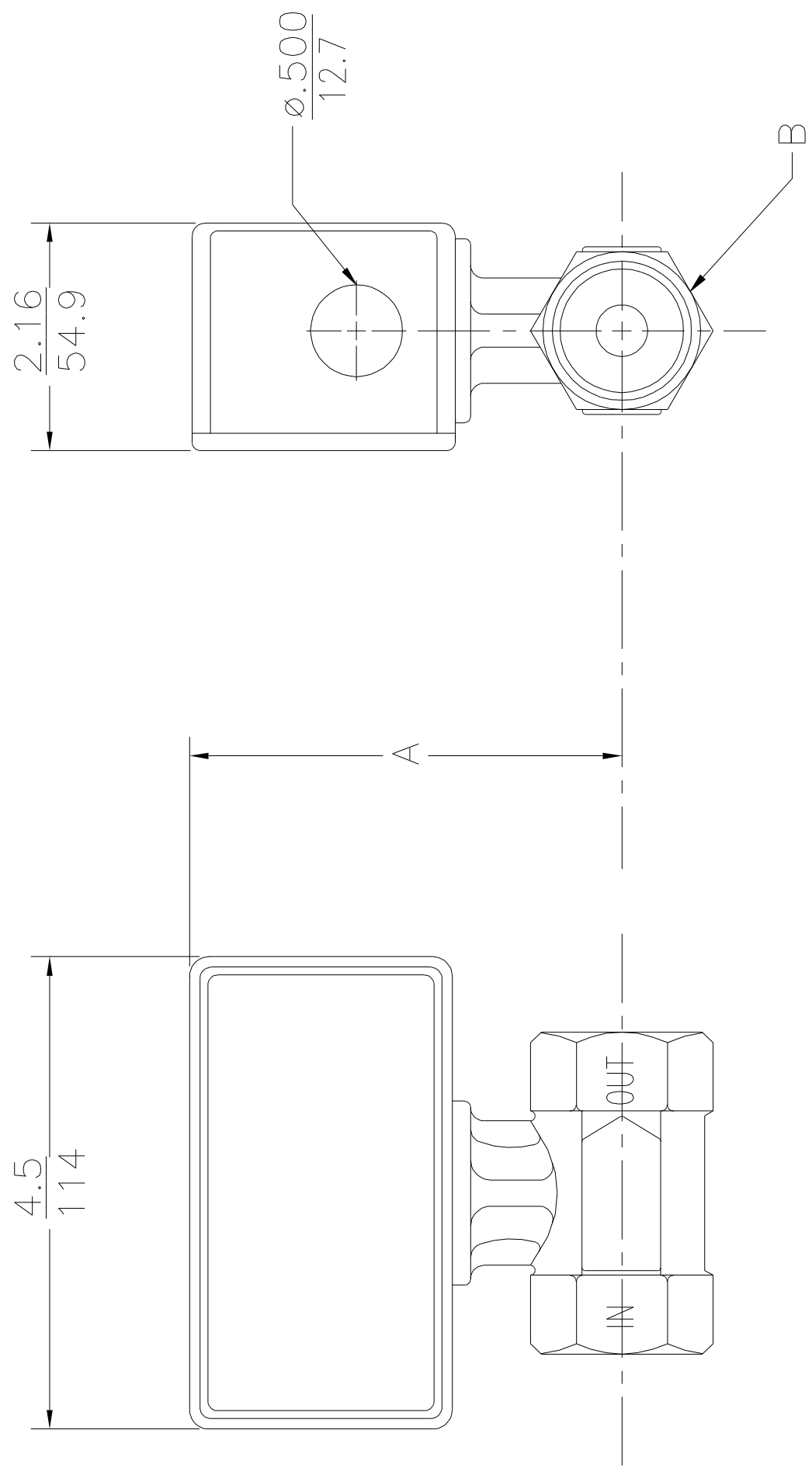


REVISIONS	
LTR	DATE
A	5/14/98
B	2/9/99
C	1/29/03
D	01/24/07

BY	CHECK

INITIAL DESIGN  
 Changed Dimension D to B, Deleted C & D  
 CHANGED 1/4" & 1/2" TO HEX  
 CHANGED BOX NO DRAFT



SERIES 7000  
BRONZE

SERIES 7000  
SST

NOTES:  
 1. DIMENSION FORMAT IS  $\frac{\text{in}}{\text{mm}}$

PIPE SIZE	DIMENSION				
	A		B		
in	mm	in	mm	in	mm
0.25	08	3.95	100	1.25	32
0.5	15	3.95	100	1.25	32
0.75	20	3.95	100	1.25	32
1.0	25	4.07	103	1.50	38
1.5	40	4.39	112	2.12	54
2.0	50	4.80	122	2.75	70
3.0	80	5.48	139	4.00	102

hex  
hex  
hex  
hex  
hex  
hex  
hex

PIPE SIZE	DIMENSION				
	A		B		
in	mm	in	mm	in	mm
0.25	08	3.20	81	1.06	27
0.5	15	3.20	81	1.06	27
0.75	20	3.95	100	1.25	32
1.0	25	4.07	103	1.50	38
1.5	40	4.39	112	2.12	54
2.0	50	4.80	122	2.75	70
3.0	80	5.48	139	4.00	102

sq  
sq  
rnd  
rnd  
rnd  
rnd  
rnd

ITEM	DWG. NO.	DESCRIPTION OF MATERIALS	QTY.
UNLESS OTHERWISE SPECIFIED: DIMENSIONS ARE IN INCHES TOLERANCES			
FRACTIONS:	E		
.X	E		
.XX	E		
.XXX	E		
ANGLES:	E		
SURFACE FINISH:	E		
DRAWN BY	S		
DATE	5/14/98		
RCM Industries, Inc. 110 MASON CIRCLE CONCORD, CA. 94520		SERIES 7000 FLOWMETER	
BLIND TRANSMITTER ASSEMBLY			
SCALE	1:1	SIZE C	DWG NO. 6511
CHECKED BY		REV D	