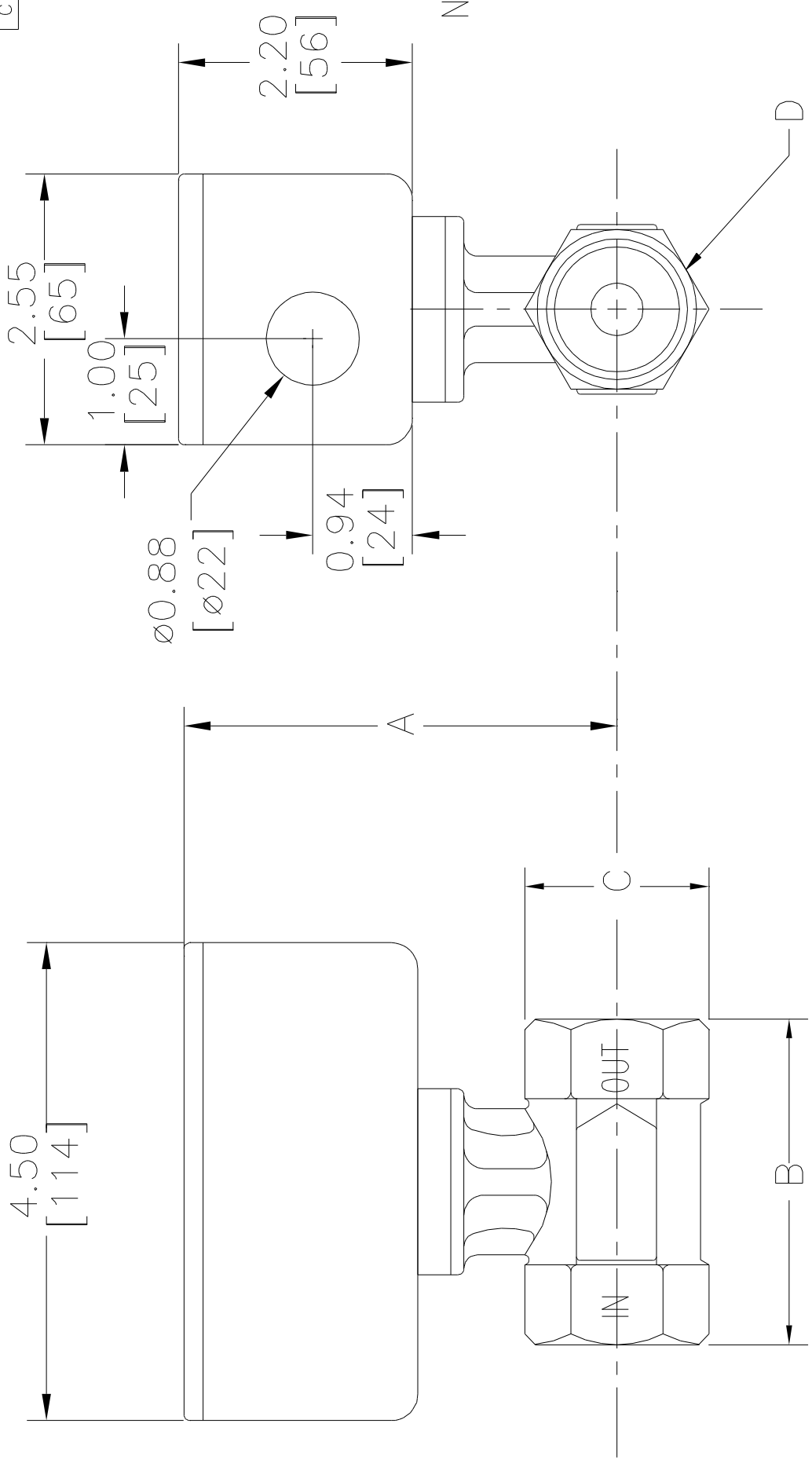


REVISIONS	
LTR	DATE
A	9/24/01
B	1/30/05
C	1/23/07

INITIAL DESIGN
 1/2" & 1/4" CHANGED TO 3/4" CASTING
 CHANGED TO SQUARE HOUSING



NOTES:
 1. DIMENSION FORMAT IS $\frac{\text{in}}{\text{mm}}$

SERIES 1000 BRONZE

PIPE SIZE	DIMENSION									
	A		B		C		D			
in	mm	in	mm	in	mm	in	mm			
0.25	08	3.93	100	3.06	78	1.50	38	1.25	32	hex
0.5	15	3.93	100	3.06	78	1.50	38	1.25	32	hex
0.75	20	3.93	100	3.06	78	1.50	38	1.25	32	hex
1.0	25	4.05	103	3.06	78	1.75	44	1.50	38	hex
1.5	40	4.43	113	3.06	78	2.50	64	2.12	54	hex
2.0	50	4.8	122	3.19	81	3.19	81	2.75	70	hex
3.0	80	5.49	139	4.19	106	4.62	117	4.00	102	hex

SERIES 1000 SST

PIPE SIZE	DIMENSION									
	A		B		C		D			
in	mm	in	mm	in	mm	in	mm			
0.25	08	3.21	82	3.06	78	1.06	27	1.06	27	sq
0.5	15	3.21	82	3.06	78	1.06	27	1.06	27	sq
0.75	20	3.93	100	3.06	78	1.50	38	1.25	32	rnd
1.0	25	4.03	103	3.06	78	1.75	44	1.50	38	rnd
1.5	40	4.43	113	3.06	78	2.50	64	2.12	54	rnd
2.0	50	4.8	122	3.19	81	3.19	81	2.75	70	rnd
3.0	80	5.49	139	4.19	106	4.62	117	4.00	102	rnd

ITEM	DWG. NO.	DESCRIPTION OF MATERIALS	QTY.
UNLESS OTHERWISE SPECIFIED: DIMENSIONS ARE IN INCHES TOLERANCES			
FRACOINS: E			
.X E			
.XX E			
.XXX E			
ANGLES: E			
SURFACE FINISH: S			
DRAWN BY: DATE: 9/24/01			
CHECKED BY: SCALE: 1:1 SIZE C DWG NO. 6641 REV C			

RCM Industries, Inc. 110 MASON CIRCLE CONCORD, CA. 94520

SERIES 1000 FLOWMETER HOUSING-BODY ASSEMBLY